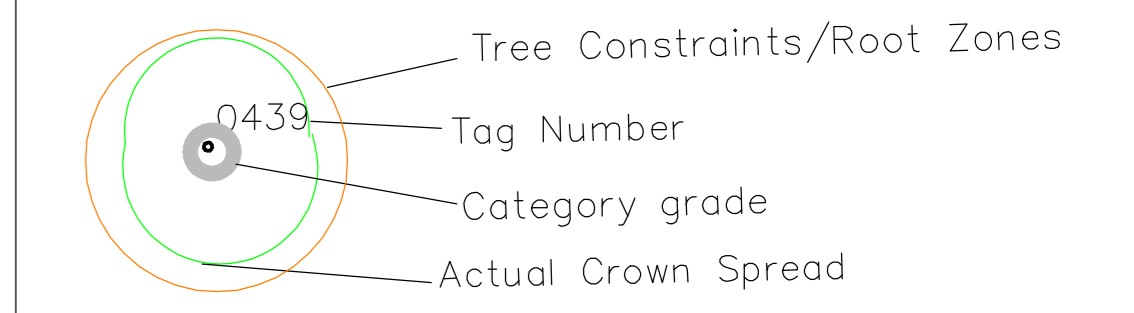
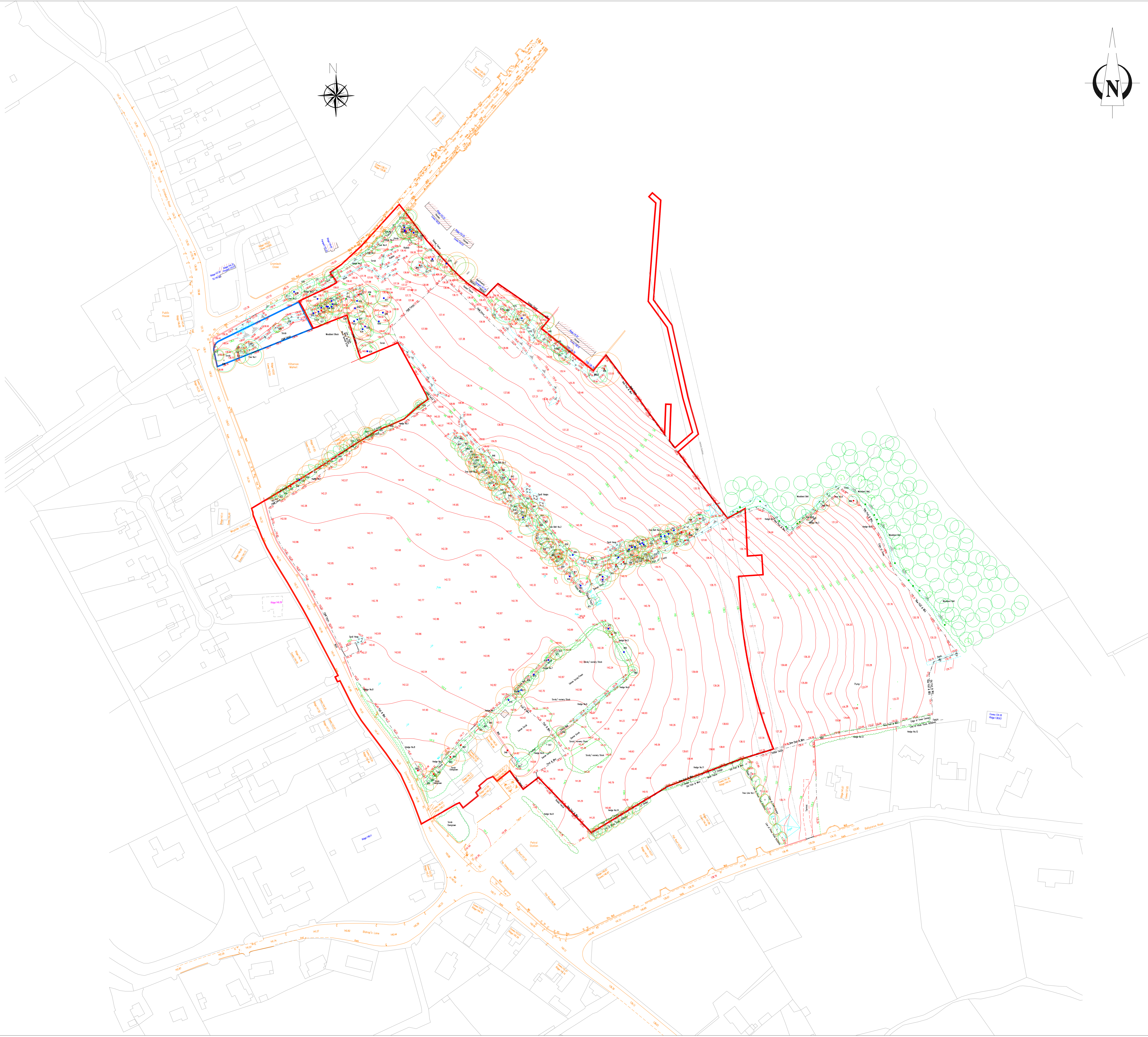


Notes:



BS5837: 2012 – Category Retention Rating

- **Category U Trees**—
Trees in such a condition that any existing value would be lost within 10 years or being recommended for removal sound arboricultural practice.
 - **Category A Trees**
Trees of high quality/value with a min. of 40 years life expectancy.
 - **Category B Trees**
Trees of moderate quality/value with a min. of 20 years life expectancy.
 - **Category C Trees**
Trees of low quality/value with a min. of 10 years life expectancy.
- Sub Categories
- 1 – Mainly Arboricultural values
 - 2 – Mainly Landscape values
 - 3 – Mainly cultural and conservation values.



ARBORIST ASSOCIATES LTD.
 94 BALLYBAWN COTTAGES, ENNISKERRY, CO. WICKLOW
 TEL: 01-2742011 / 087-2629589

TITLE: Tree Constraints Plan

Site: Kiltinnan Village SHD
 Residential Development at Lands at
 Wayside, Enniskerry Rd., Kiltinnan, Dublin 18

DATE: Dwg No. KVL001
 Overall Site Area Scale 1:1000 © AD